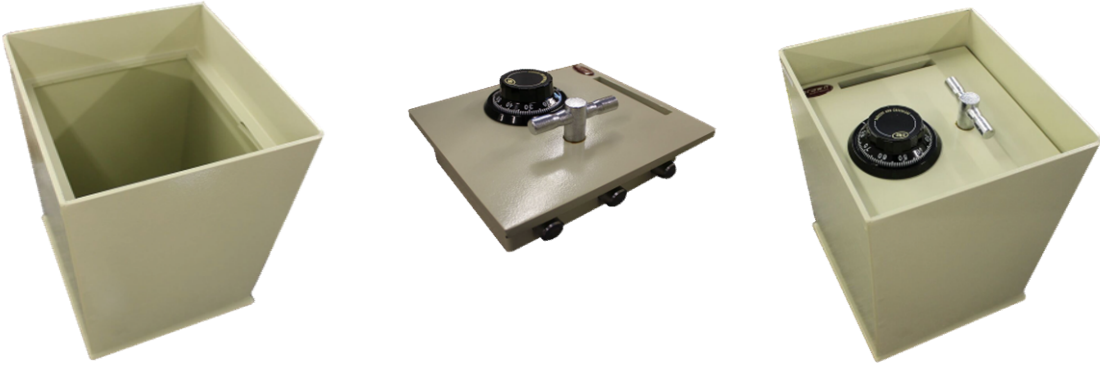


<b>Product Name</b>	<b>Floor Safe</b>
<b>Model No.</b>	<b>FS-1014S</b>

**Specifications**

1. Door constructed of 1/2" thick A36 steel plate
2. An additional independent spring-loaded relocking device, activated by a punching attach for models B1500 and above
3. Body "B" rate construction with large storage capacity and flush cover plate for total concealment under a carpet
4. 1/4" exterior bottom flange and powder coat
5. Supplied with S&G combination or SecuRam electronic

<b>External Dimensions</b>	<b>Internal Dimensions</b>	<b>Slot</b>	<b>Weight</b>
<b>H X W X D (Inch)</b>			<b>(Lbs.)</b>
<b>14.84 x 9.57 x 10.06</b>	<b>7.7 x 8.75 x 9.3</b>	<b>0.5 x 4.5</b>	<b>48.4</b>



*Protecting Canadians Coast to Coast*